

FEATURES

- 4 x 1000 Base-T and up to 8 x 100 Base-Tx Ethernet ports
- 4.8 Gbps total switching performance
- Supports up to 12 Ethernet Ports and accepts;
 - Best-effort traffic (IEEE802.3)
 - Time-triggered traffic (AS6802)
 - Rate-constrained traffic (ARINC664 P7)
- Safe partitioning between best-effort, rate-constrained and time-triggered Ethernet traffic
- Fault-tolerant communications with high bandwidth utilisation
- Rugged construction for launcher environment
- Maximum ease of use
- Low-outgassing materials used in construction
- Rugged electrical connections

RLT-ETH-12 - OVERVIEW

The **RLT-ETH-12** from Réaltra Space Systems Engineering is a high-performance Ethernet / Time Triggered Ethernet, Network switch specifically designed to meet the challenges of harsh space environments. The Network Switch module simplifies the design of complex distributed systems or applications, and allows safe processing of critical and non-critical Ethernet traffic on a single network.

The Network Switch module permits the use of synchronised and non-synchronised functions of distributed systems in the same Ethernet network. System-critical hard real-time functions enjoy reserved bandwidth, full determinism and delivery jitter below 1us.

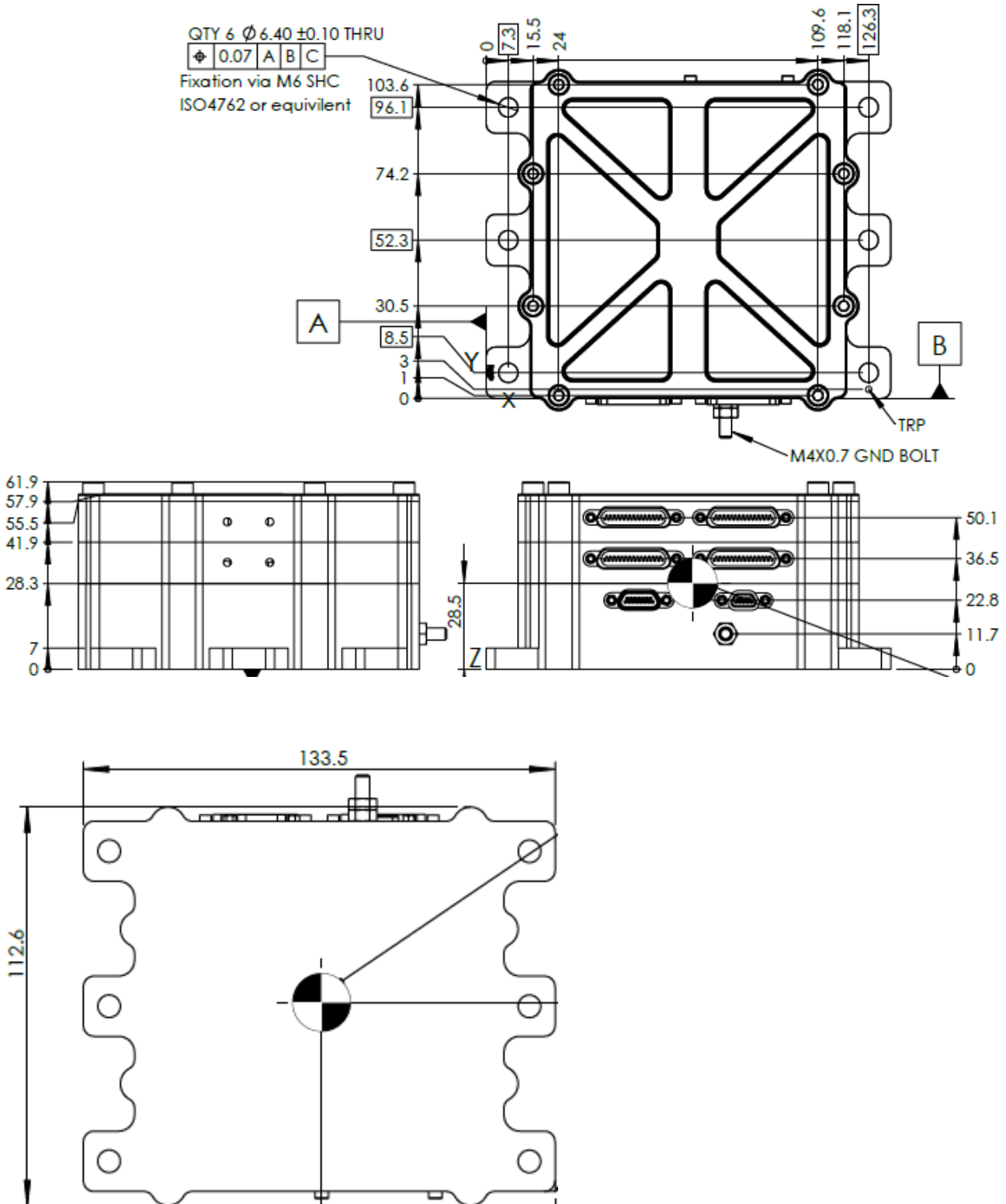
Thanks to a combination of SAE AS6802 time-triggered Ethernet, ARINC 664 Part 7 compatible rate-constrained Ethernet and IEEE 802.3 best-effort Ethernet, high transfer rates for non-critical data can be achieved at the same time, without impacting critical traffic.

The Network Switch module has an internal storage of 512kB to enable the storage of lower priority traffic while higher priority traffic is processed.

The Network Switch Module can also form the core of a TTEthernet network. The module is built in a PC/104 form factor that fits in the Realtra Data Acquisition chassis which allows an easy configuration set up for a telemetry

Dimensions (mm)	133.5 x 112.6 x 61.9
Mass (kg)	1.157kg
Supply Voltage (V)	28
Environment	ISO 14001, RoHS, REACH compliant

TECHNICAL DRAWINGS



To make an enquiry, request a quotation or learn about Réaltra's other products and services, please contact:



Réaltra Space Systems Engineering
The Realtime Building,
Clonshaugh Business Park,
Dublin,
D17 H262,
Ireland.



info@realtra.space



www.realtra.space



www.linkedin.com/company/realtra

Note: Information in this document is subject to change without notice and becomes contractual only after written confirmation by Réaltra Space Systems Engineering.

TTE Technology Partner for Réaltra is TTech. Web: www.ttech.com

Manufacturing Partner for Réaltra is Realtime Technologies Ltd. Web: www.realtime.ie

TTech

Realtime
TECHNOLOGIES